

Operator (Report): ZetaView
Video Operator: ZetaView

Sample Parameters

Sample Name: UFB-20190905-20minites-R
Comment: Sample Remarks0: 10ml
Sample Remarks1:
Sample Remarks2:
Electrolyte: -
Temperature: 32.77 °C sensed
pH 7.0 entered
Conductivity: 72.30 μ S/cm sensed

Result (sizes in nm)

	Number	Concentration	Volume
Median (X50)	108.7	108.7	459.6
Span	108.5	108.5	201.8
Concentration:	1.1E+8 Particles / mL		
Dilution Factor:	60		
Original Concentration:	6.7E+9 Particles / cm ³		

Measurement Parameters

Cell S/N: 0158

Quality

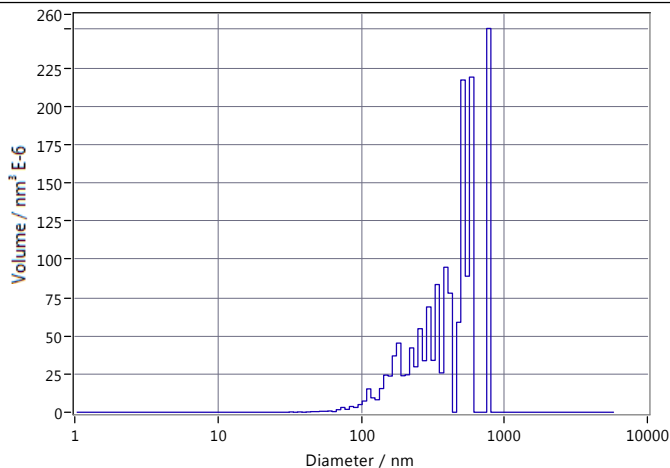
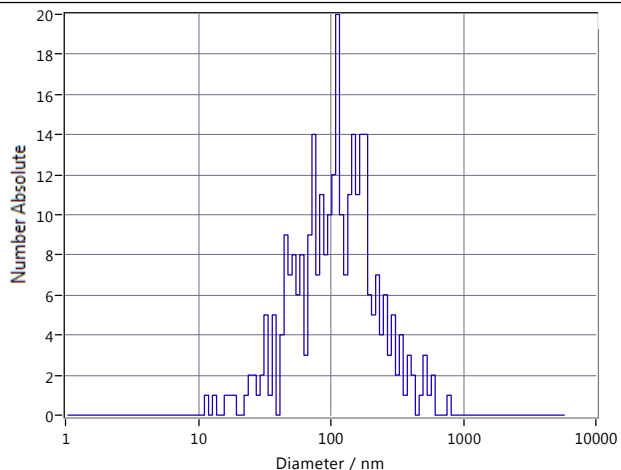
Average Counted Particles per Frame: 232
Number of Traced Particles: 297

Measurement Mode: Size Distribution 3 Cycles

11 Positions, 4 Removed for Analysis

Analysis Parameters

Max Size: 500, Min Size: 5, Min Brightness: 20

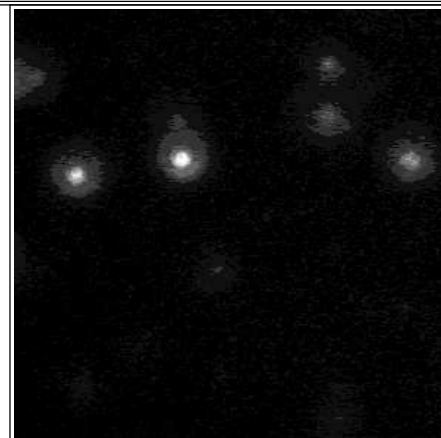


Peak Analysis (Number Absolute)

Diameter / nm	Number Absolute	FWHM / nm	Percentage
99.5	10.3	11.9	47.1
132.2	8.0	474.7	52.9

X Values

	Number	Concentration	Volume
X10	43.6	43.6	171.5
X50	108.7	108.7	459.6
X90	254.2	254.2	748.3
Span	1.9	1.9	1.3
Mean	139.8	139.8	449.9
StdDev	108.5	108.5	201.8



Comment

(Signature)

Analyzed Video: C:\Users\ZetaView\Desktop\20181029\20190906_0007_UFB-20190905-20minites-R_size.avi



Operator (Report): ZetaView
Video Operator: ZetaView

Sample Parameters

Sample Name: UFB-60minutes-1.3V-09A
Comment: Sample Remarks0: 10ml
Sample Remarks1:
Sample Remarks2:
Electrolyte: -
Temperature: 28.44 °C sensed
pH 7.0 entered
Conductivity: 70.03 μ S/cm sensed

Result (sizes in nm)

	Number	Concentration	Volume
Median (X50)	92.7	92.7	1165.6
Span	155.5	155.5	587.0
Concentration:		8.1E+7 Particles / mL	
Dilution Factor:		1	
Original Concentration:		8.1E+7 Particles / cm ³	

Measurement Parameters

Cell S/N: 0158

Quality

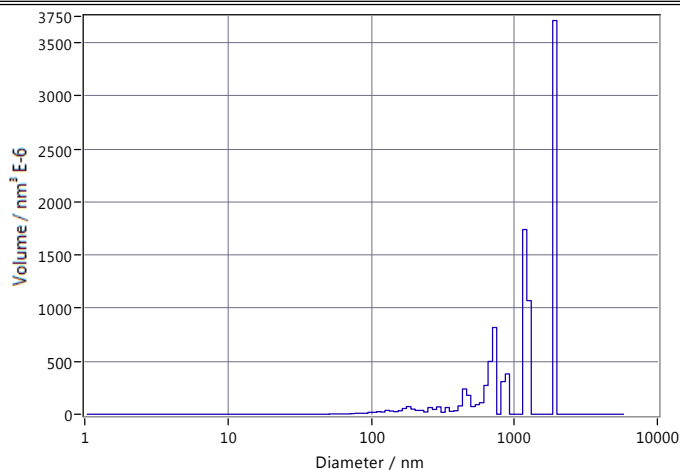
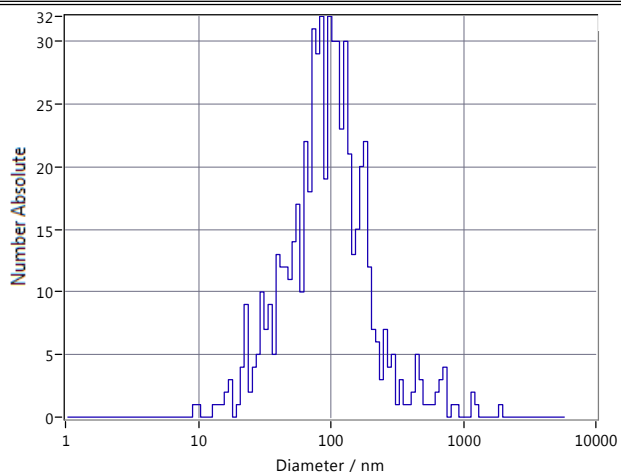
Average Counted Particles per Frame: 170
Number of Traced Particles: 620

Measurement Mode: Size Distribution 3 Cycles

11 Positions

Analysis Parameters

Max Size: 500, Min Size: 5, Min Brightness: 20

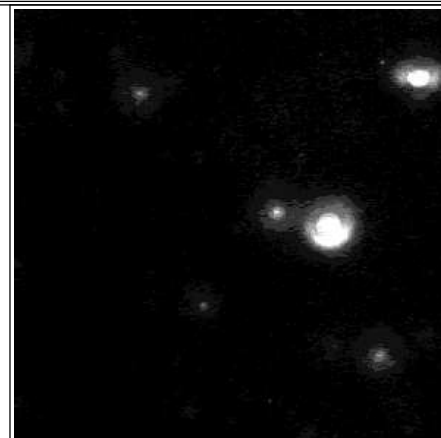


Peak Analysis (Number Absolute)

Diameter / nm	Number Absolute	FWHM / nm	Percentage
96.6	28.3	82.4	100.0

X Values

	Number	Concentration	Volume
X10	35.4	35.4	437.5
X50	92.7	92.7	1165.6
X90	204.6	204.6	1884.6
Span	1.8	1.8	1.2
Mean	131.2	131.2	1234.1
StdDev	155.5	155.5	587.0



Comment

(Signature)



Operator (Report): ZetaView
Video Operator: ZetaView

Sample Parameters

Sample Name: UFB-60minutes-1.3V-09A-second
Comment: Sample Remarks0: 10ml
Sample Remarks1:
Sample Remarks2:
Electrolyte: -
Temperature: 29.29 °C sensed
pH 7.0 entered
Conductivity: 73.72 μ S/cm sensed

Result (sizes in nm)

	Number	Concentration	Volume
Median (X50)	88.9	88.9	776.2
Span	106.1	106.1	436.1
Concentration:	8.5E+7 Particles / mL		
Dilution Factor:	1		
Original Concentration:	8.5E+7 Particles / cm ³		

Measurement Parameters

Cell S/N: 0158

Quality

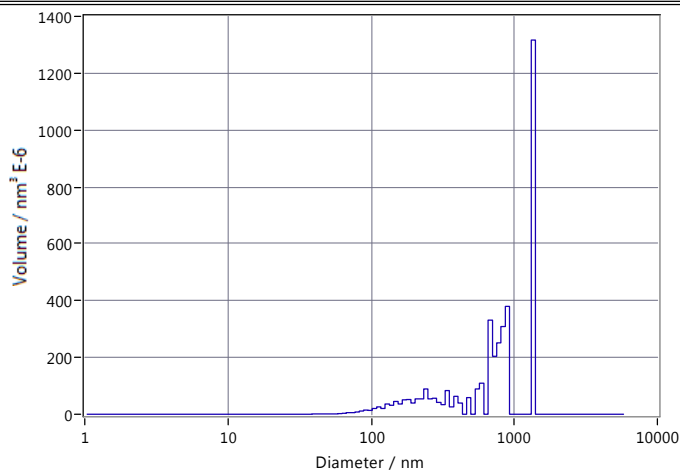
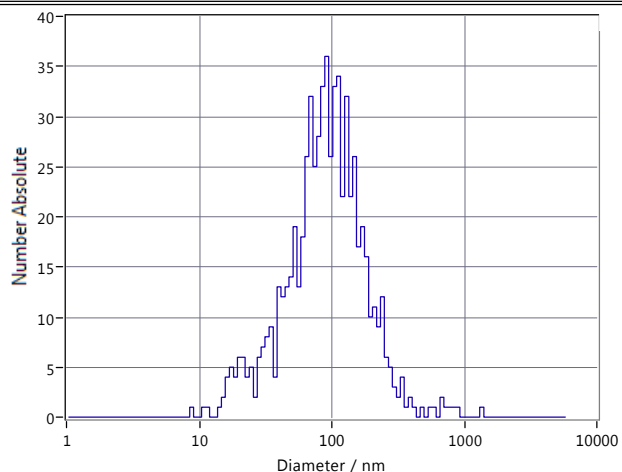
Average Counted Particles per Frame: 177
Number of Traced Particles: 681

Measurement Mode: Size Distribution 3 Cycles

11 Positions

Analysis Parameters

Max Size: 500, Min Size: 5, Min Brightness: 20

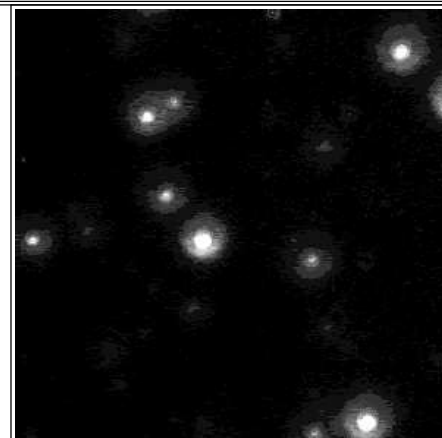


Peak Analysis (Number Absolute)

Diameter / nm	Number Absolute	FWHM / nm	Percentage
96.7	28.7	97.8	100.0

X Values

	Number	Concentration	Volume
X10	33.9	33.9	190.1
X50	88.9	88.9	776.2
X90	193.8	193.8	1331.6
Span	1.8	1.8	1.5
Mean	114.6	114.6	821.1
StdDev	106.1	106.1	436.1



Comment

(Signature)



Operator (Report): ZetaView
Video Operator: ZetaView

Sample Parameters

Sample Name: UFB-60minutes-1.3V-09A-third
Comment: Sample Remarks0: 10ml
Sample Remarks1:
Sample Remarks2:
Electrolyte: -
Temperature: 29.71 °C sensed
pH 7.0 entered
Conductivity: 76.95 μ S/cm sensed

Result (sizes in nm)

	Number	Concentration	Volume
Median (X50)	92.0	92.0	183.1
Span	59.0	59.0	75.9
Concentration:	8.4E+7 Particles / mL		
Dilution Factor:	1		
Original Concentration:	8.4E+7 Particles / cm ³		

Measurement Parameters

Cell S/N: 0158

Quality

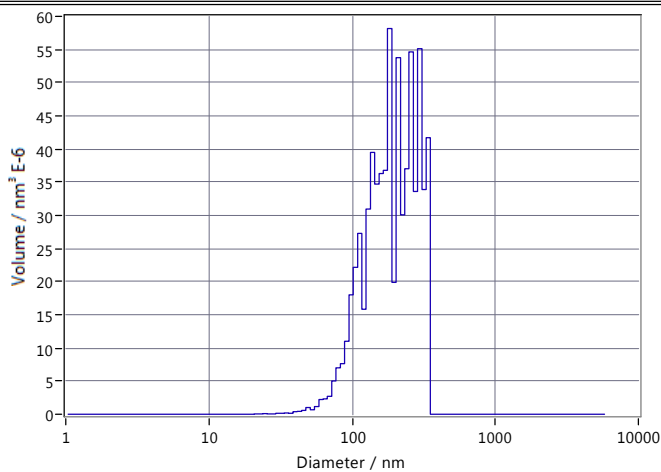
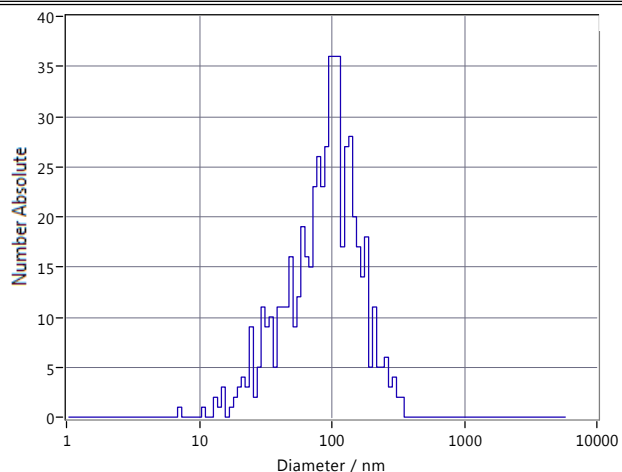
Average Counted Particles per Frame: 176
Number of Traced Particles: 583

Measurement Mode: Size Distribution 3 Cycles

11 Positions, 2 Removed for Analysis

Analysis Parameters

Max Size: 500, Min Size: 5, Min Brightness: 20

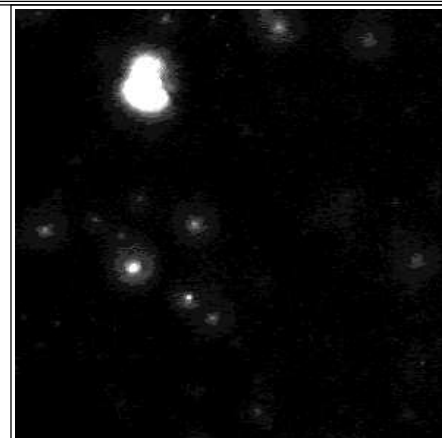


Peak Analysis (Number Absolute)

Diameter / nm	Number Absolute	FWHM / nm	Percentage
102.0	36.0	49.1	100.0

X Values

	Number	Concentration	Volume
X10	32.9	32.9	102.1
X50	92.0	92.0	183.1
X90	173.0	173.0	299.6
Span	1.5	1.5	1.1
Mean	102.3	102.3	201.8
StdDev	59.0	59.0	75.9



Comment

(Signature)